

# Comcast Business SD-WAN Solutions

Powered by Versa

Help secure and simplify your network



Mid-to-large organizations with U.S. headquarters and geographically dispersed offices face complex networking challenges, including migrating IT to the cloud and rapidly deploying new sites while promoting security. As enterprises prioritize implementing technology that scales and evolves, software defined wide area network (SD-WAN) emerges as an important tool for helping to keep businesses running by enhancing network performance through business-traffic prioritization, packet loss reduction, and addressing latency issues. More recently, small businesses have required advanced, higher-performing network services to prioritize critical data traffic.

SD-WAN can support your business's needs, regardless of size, by empowering IT teams to dynamically and securely route network traffic, enabling seamless access to business applications and cloud-based resources. By offloading non-critical business apps onto broadband and automating monitoring tasks, SD-WAN helps manage costs by eliminating certain hardware expenses. Additionally, SD-WAN enables direct traffic to the cloud access at remote branches, avoiding backhauling traffic through data centers.

## Comcast Business SD-WAN Solutions

Comcast Business SD-WAN, powered by Versa, is a comprehensive managed solution designed to optimize and simplify network performance across your organization's sites. By seamlessly integrating software-defined networking with a centralized, intelligent software defined network (SDN) console, it helps provide reliable connectivity—whether site-to-site, site-to-cloud, or site-to-SaaS—so users can access business-critical applications from any location. Delivered as an over-the-top (OTT) service via a physical or virtual site, Comcast Business SD-WAN supports both Comcast-provided and customer-provided underlay, enabling flexible virtual networking across one or many locations.

With real-time visibility and control through the portal and backed by a 99.99% service-level agreement (SLA) for reliable service, Comcast Business SD-WAN empowers your business with an easy-to-manage network solution.



### Management and Intelligence

High-touch managed experience with network insights and intelligence via our robust digital experience.



### Advanced Security

Optional integration of software-based or cloud cybersecurity solutions within your advanced SD-WAN network.

COMCAST  
BUSINESS

## Features & Benefits

<b>Application-aware functionalities</b>	<ul style="list-style-type: none"> <li>• Allow for application prioritization.</li> <li>• Create dynamic policies to direct traffic over the optimal path.</li> <li>• Enable automatic failover.</li> </ul>
<b>Dynamic traffic steering (VPN) and routing (internet)</b>	<ul style="list-style-type: none"> <li>• Route application group traffic over the preferred underlay.</li> <li>• Transparent failover.</li> </ul>
<b>Internet transport agnostic</b>	<ul style="list-style-type: none"> <li>• Service can be combined with Comcast-provided as well as customer-provided underlay.</li> </ul>
<b>Integrated firewall</b>	<ul style="list-style-type: none"> <li>• Integrated virtual private network (VPN) and stateful firewall.</li> <li>• Option to add on advanced security solutions (such as Unified Threat Management, or UTM) for on-premises or cloud-based security. Both are available with SD-WAN.</li> </ul>
<b>Transparency and simplified management</b>	<ul style="list-style-type: none"> <li>• Visibility and control of centralized policies and configuration via intuitive digital experience.</li> <li>• Actionable network insights sourced via real-time dashboard and customized reports.</li> </ul>
<b>Optimized application availability</b>	<ul style="list-style-type: none"> <li>• Optimized availability and performance of business applications.</li> <li>• Business continuity via various redundancy options.</li> </ul>
<b>Network flexibility</b>	<ul style="list-style-type: none"> <li>• Allow up to 4 underlays.</li> <li>• Help keep your network running with 4G LTE backup (optional add-on).</li> </ul>
<b>Direct connectivity to the cloud</b> (optional add-on)	<ul style="list-style-type: none"> <li>• Cloud instance acts as expansion of physical SD-WAN network to virtually control and manage your network.</li> </ul>
<b>Reporting and analytics</b>	<ul style="list-style-type: none"> <li>• Obtain greater network visibility with detailed reporting.</li> <li>• Empower IT teams with application intelligence and performance metrics.</li> </ul>
<b>Affordable</b>	<ul style="list-style-type: none"> <li>• Affordable monthly pricing.</li> </ul>

### PCI Compliance

An important consideration when storing and transmitting sensitive credit card data using industry standard encryption (AES-256).



### Systems & Organizational Controls (SOC2) Certification

Annual certification by approved 3rd party auditors to help ensure service organizations meet baseline of technical and operational requirements designed to validate network systems security.



## Business Outcomes



### Enhanced productivity

Quick application deployments and efficient bandwidth demand management



### Improved performance and control

Intelligent routing and application visibility can reduce latency and help increase application response times



### Business continuity

Multiple redundancy options and advanced security add-ons



### Scalability

Scalability with connectivity options from low bandwidth to gigabit speeds

## Advanced Managed Services

Help reduce the burden on your IT teams by allowing them to focus on strategic initiatives when you opt for our fully managed solution.

- Network design and configuration with solution architects
- Dedicated project manager
- Real-time order and network updates via customer portal
- Proactive monitoring, alarming, ticket creation and remediation
- Equipment replacement SLO: On-net: 24x7 (by 4 hours) | Off-net: 8x5 (by next business day)
- MAC SLOs: Simple Configuration Change: 30 minutes | Complex Configuration Change: 12 hours (downtime required)
- Customer birth certificate
- 30-day curation period after site is activated for changes to configuration (network tuning)
- Network consultation and access to SD-WAN experts (post-installation)

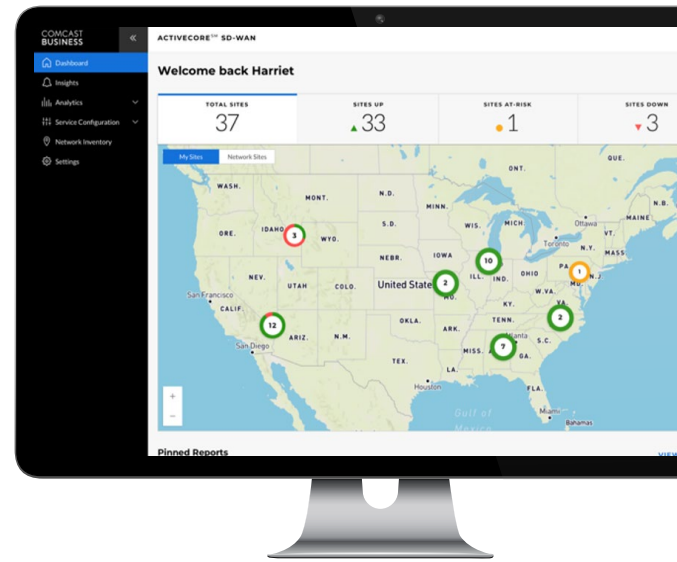


## Digital Experience

Our customer portal is a carrier-grade software-defined networking (SDN) platform that helps companies migrate to the SDN world of centralized controls.

Because Comcast Business SD-WAN and the customer platform are integrated with Comcast Business' operational and support systems, you can gain application and network visibility and centralized policy-setting control across sole or multiple locations.

Real-time insights, down to the port and device level, help you better manage apps and traffic across your software-defined network. You'll have actionable insights on any device, allowing you to quickly act on important business opportunities.



## Robust Functionality from Anywhere

A single pane of glass brings together management, control, and analytics across your enterprise.



**Unified Visibility:** At-a-glance view of the whole network plus comprehensive analytics from a single dashboard



**Managed costs:** Provide data-driven insights to help you with budgeting and strategic decisions, including identifying the need for updates or adjustments



**Enhanced security:** Simplified VPN, network segmentation, and uniform policy enforcement to help manage security across the enterprise and out to your branches



**Top-down approach:** Comprehensive overview of network events, including device, port, and WAN data path health status

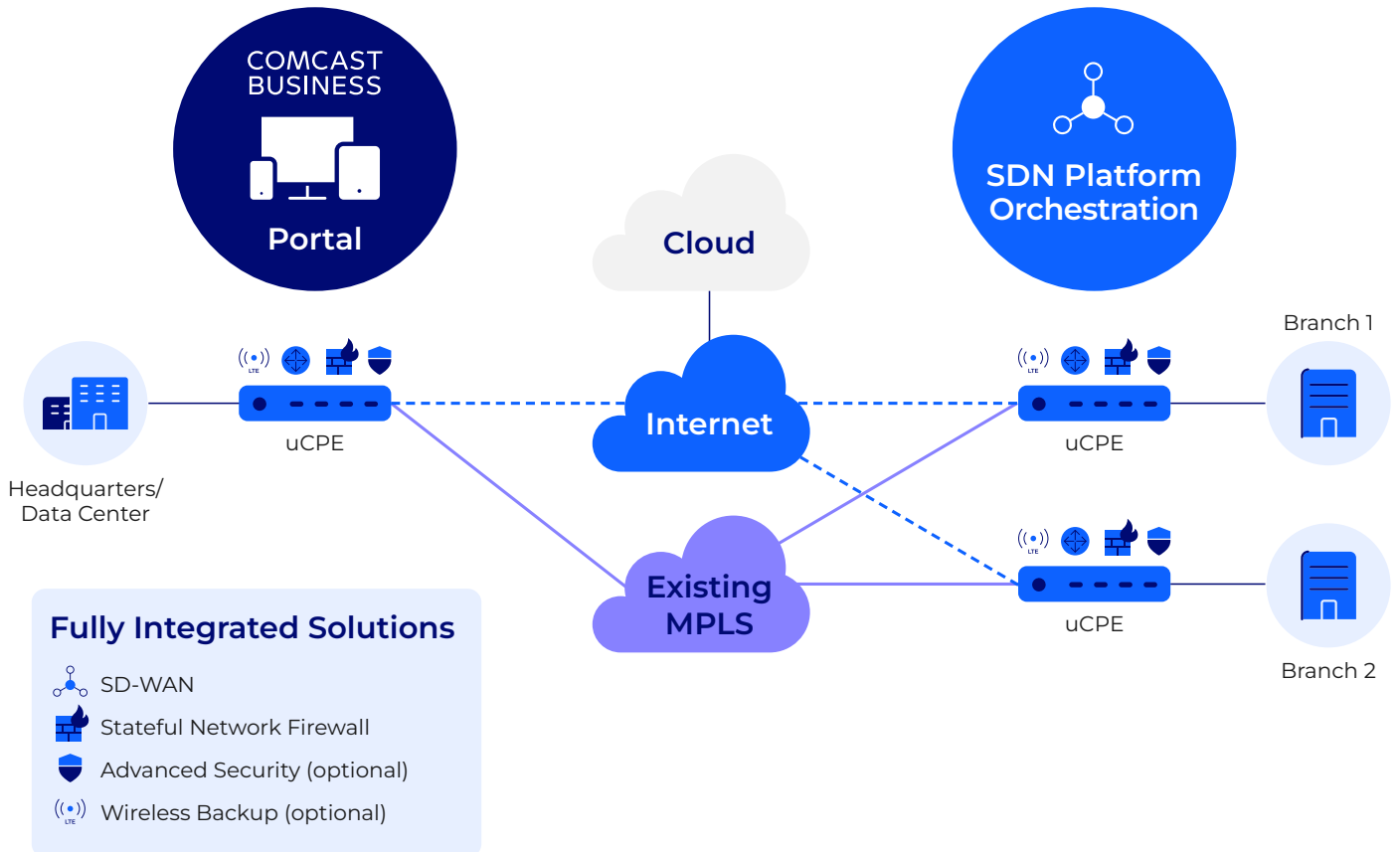


**Powerful intelligence:** Rich insight into network and application utilization and performance, with reporting features to help you make the most of your data

# SD-WAN Topologies

## Comcast Business SD-WAN (VPN)

- Centralized management console with universal CPE deployed at each customer site
- Application-aware prioritization and traffic steering
- Access-agnostic capabilities supporting underlying transport on Comcast and/or third-party private or public connection; accommodates L2 / L3
- Scalable connectivity with options from low bandwidth to gigabit speeds
- Security and network segmentation



# Comcast Business SD-WAN with Standalone Site Support

## Highly available internet connectivity

- 1 to 4 Internet circuits
- 99.995% site availability SLA
- Application-level routing

## Secure networking

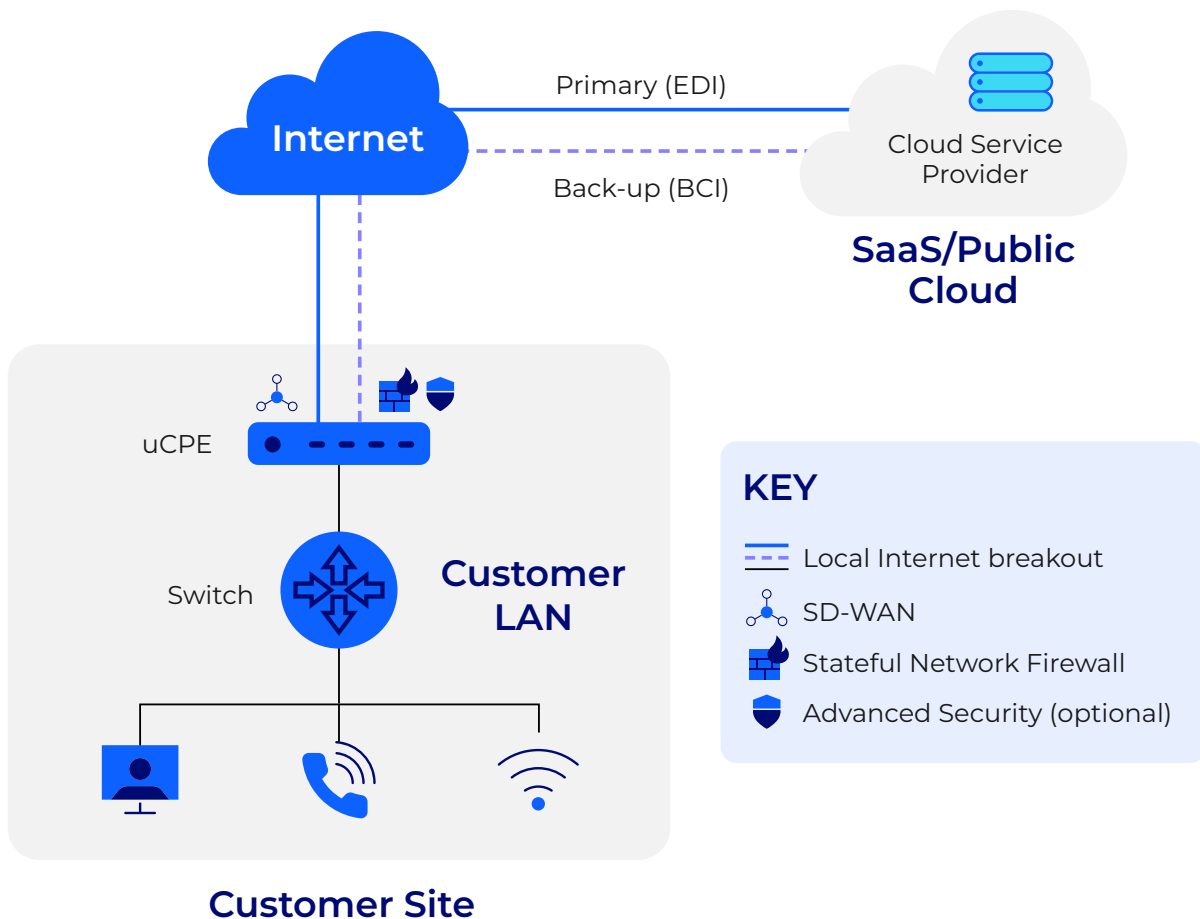
- Optional advanced security with dynamic threat updates

## Simple design in a managed experience

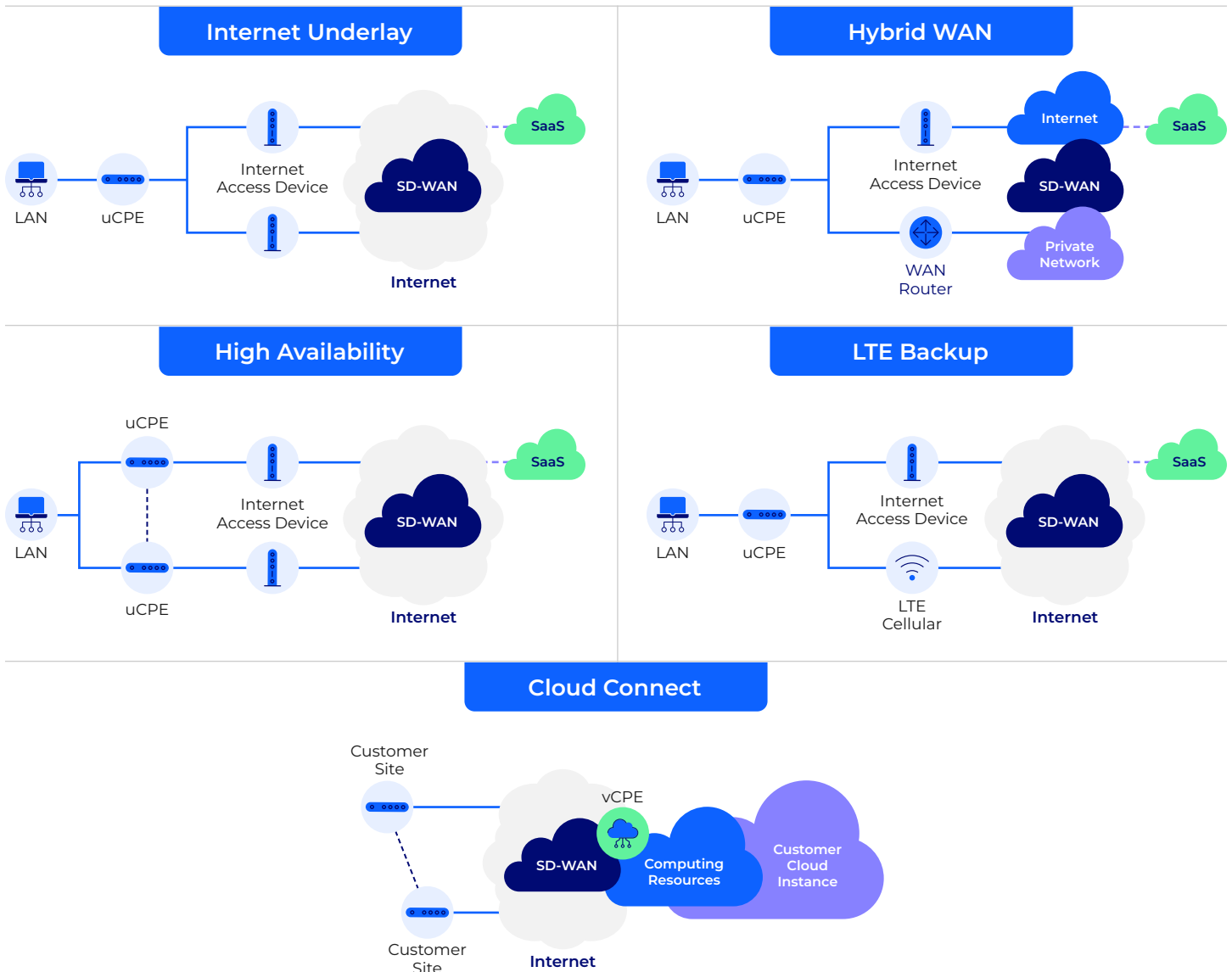
- One on-premise uCPE
- Proactive management, trouble-ticketing and resolution

## Customer portal

- Customer network, security visibility and control



# Deployment Options



## Hybrid WAN

Comcast Business Hybrid SD-WAN allows businesses to incrementally software-define their networks with no need to rip and replace existing legacy infrastructures. The hybrid approach:

- Enables network traffic to be routed dynamically across a new broadband WAN or over the legacy network path.
- Provides the ideal solution for businesses to take advantage of the capabilities of broadband, with the time to comfortably migrate applications from legacy services.

## High Availability

Comcast Business SD-WAN High Availability (HA) places two uCPEs at the customer premises, with both connected to the network. Redundant uCPEs eliminate the potential for single point of failure at the hardware level, providing enhanced network resiliency.

## LTE Wireless Backup

Should your primary Internet connection experience an unexpected outage or downtime, Comcast Business wireless backup service will help your business stay connected. This failover service helps your business with a backup option. With wireless backup service, you get a managed diverse connection with all the visibility and control available on the SD-WAN platform.

- Leverages major national carriers to deliver 4G backup service and low latency
- Network monitoring
  - VPN usage over 4G/LTE within the digital experience
  - Allows for opt-in to use application awareness to optimize LTE connectivity
- Simple installation
  - 4G/LTE wireless backup can be installed with SD-WAN
- Managed cost

## Cloud Connect

Comcast Business SD-WAN with Cloud Connect is an optional feature that enables you to virtually control and manage your network within the infrastructure of an AWS or Azure cloud instance. This virtual instance acts as an extension of your physical Comcast Business SD-WAN network, giving you the same managed services and behaviors as all your physical sites.